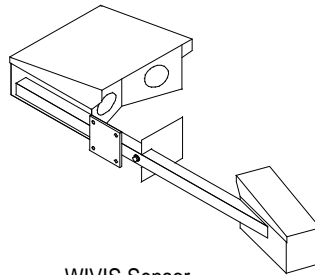


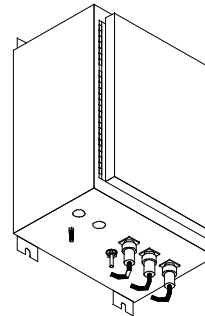
Weather Identifier and Visibility Sensor (WIVIS)

SSI Model #WIVIS

SSI P/N 57010400



WIVIS Sensor



WIVIS Processor

OPERATIONAL

Accuracy:

Precipitation

| | |
|-------------------------------|-------|
| False Alarm | <0.2% |
| False Identification | <1% |
| Precipitation Intensity Error | |
| From 0.4 in/hr to 4 in/hr | <5% |
| From 0.1 in/hr to 20 in/hr | <10% |

Visibility

| | |
|---------------------------|------|
| From 0.005 mile to 1 mile | <20% |
|---------------------------|------|

Environmental:

All weather, full water and ice proof

Lightning/Overtoltage Protection:

Meets NWS/ASOS Specifications

Field Calibration:

Required when installed and annually

Sensor Monitoring Device:

SCAN[®] Plus & SCAN for Windows RWIS

Precipitation Reported:

| | |
|----|--|
| L- | Light Drizzle |
| L | Moderate Drizzle |
| R+ | Heavy Rain |
| R | Moderate Rain |
| R- | Light Rain |
| S+ | Heavy Snow |
| S | Moderate Snow |
| S- | Light Snow |
| P+ | Heavy Precipitation - not distinguished |
| P | Moderate Precipitation - not distinguished |
| P- | Light Precipitation - not distinguished |

TECHNICAL

| | |
|---------------|----------------------------|
| Optical Path: | 0.4m |
| Source: | Infrared LED, 850 nm, 10mw |
| Receiver: | PIN Photodetector |

| | |
|--------|---------------------------------------|
| Power: | 115 VAC, 48-68 Hz AC 35 watts max. |
|--------|---------------------------------------|

Overall Size

| | |
|------------------------|-----------------|
| Head/Mount: | 28" x 5" x 11" |
| Electronics Enclosure: | 16" x 12" x 10" |

Weight:

| | |
|------------------------|-----------|
| Head/Mount | 8 pounds |
| Electronics Enclosure: | 25 pounds |

MTBF: 38,000 hours

MTTR: 15 minutes

Maintenance: Every 6 months (cleaning optics)

Data Output: RS-232 with several formats

Precipitation Intensities:

(Intensities are NWS/ASOS standards)

From 0.02 to 200 in/hr

Visibility Range

From 0.005 to 1 mile

Data Update Interval

Once per minute

Temperature Range:

| | |
|-----------|----------------|
| Storage | -70°C to +80°C |
| Operation | -50°C to +50°C |