

NC-100™ (Count Only)

NC-200™ (Count, Speed & Classification)

PORTABLE TRAFFIC ANALYZER

NC-100
NC-200

OVERVIEW

The NC-100/200 Portable Traffic Analyzer is a self-contained unit that monitors traffic flow conditions around the clock, providing the data you need for accurate traffic analysis. Utilizing Vehicle Magnetic Imaging technology, the NC-100/200 records traffic conditions and exports them to Highway Data Management Software (HDM) for fast generation of charts, reports, histograms and graphs.

FEATURES AND BENEFITS

- ▶ Easy and fast installation in roadway
- ▶ Durable extruded aluminum housing
- ▶ Long life, rechargeable, Lithium-ion battery
- ▶ 13 length classification bins
- ▶ No tubes, loops and chains

APPLICATIONS

- ▶ Multi-Lane Highways
- ▶ City Streets
- ▶ Intersections & Turn Lanes
- ▶ Unimproved Road
- ▶ Construction Zones
- ▶ State & Recreational Parks
- ▶ Casinos & Sports Arenas
- ▶ Airports
- ▶ Military Bases
- ▶ Parking Lots & Garages



NC-100/200

Quixote
Transportation Technologies, Inc.

WWW.QTTINC.COM

QTT NC-100 AND NC-200 SPECIFICATIONS

Housing Material: Extruded / anodized aluminum

Ultimate Bearing Strength: 88,000 psi (607 MPa)

Dimensions: 7.125 in. x 4.625 in. x 0.5 in.
(181 mm x 118 mm x 12.7 mm)

Weight: 1.3 lbs (0.59 kgs)

Electronic PCB: Conformal coated and water resistant

Operating Temperature: -4°F to +140°F (-20°C to +60°C)

Sensor: GMR magnetic chip for Vehicle Magnetic Imaging

Memory: Micro Serial Flash: 3MB

Battery/Power: Lithium Ion Rechargeable
3.0 - 4.20 Vdc, 3000 mAh at 23°C
Nominal voltage 3.70 vdc
Up to 21 days before recharge
Automatic overcharge protection
Field replaceable by customer

Computed Values: Imperial or Metric

Roadway Occupancy: Percent occupancy over report interval

Count Period Frame Mode: 1 to 120 min

*** Capacity:** Up to 300,000 vehicles or 21 days per study, whichever occurs first

Data Program/Read Rate: 115K~9600 baud RS-232 user selectable

Communication Link: Standard RS-232
USB adapter optional

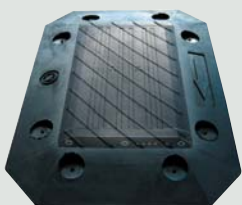
Real-Time-Clock: Yr, Mo, Day, Hr, Min, Sec

*** Length Classification (% of Volume):** 13 bins (user selectable length range)

*** Speed Class (% of Volume):** 15 bins (user selectable speed range)

Vehicle Count Determination: Automatic headway adjustment 8 - 120 mph (12.8 - 193 kph)
<8 mph (12.8 kph) recorded as stopped vehicle

*** APPLIES TO MODEL NC-200**
Specifications subject to change without notice



THE NC-100/200 PROTECTIVE COVER

The protective cover, specifically molded for the NC-100 and NC-200 series, is constructed to withstand the impact of heavy vehicles and damage from most chemicals such as oil and fuel. Placed over the NC-100/200, the cover is easily installed using a screw drill. After the traffic study is complete, remove the cover and it is ready for use on another installation.

11 in. x 8 in. x 0.7 in.
(279 mm x 203 mm x 17.8 mm)



WWW.QTTINC.COM



Quixote Transportation Technologies, Inc.
518 University Drive • Uniontown, Pennsylvania 15401
Tel: (724) 438-8750 • Fax: (724) 438-8769
Toll Free: (800) 346-2025
www.qttinc.com

HDM SOFTWARE

Index	Id	Location	Street	City	State	Lane	Start Date	Start Time
1	1163	1ST STUDY	RAMP	CENTERVILLE	PA	RIGHT LAN	07/29/98	12:00 AM
2	1011	2ND STUDY	RAMP	CENTERVILLE	PA	LEFT 40 W	07/29/98	12:00 AM
3	306	3RD STUDY	TOWARDS BROWNSVILLE	GRINDSTONE	PA	STRAIGHT	07/29/98	12:00 AM
4	1251	RT 40 EAST	FROM OLD RT 40 BR	GRINDSTONE	PA	STRAIGHT	07/29/98	12:00 AM
5	1090	FROM OLD RT 40 BR	RT 40 EAST TO LIGHT	GRINDSTONE	PA	TURN AT 5	07/29/98	12:00 AM
6	1275	RT 40 WEST	TURN TO 166	GRINDSTONE	PA	STOP LIGHT	07/29/98	12:00 AM
7	888	RT 40 WEST	STRAIGHT TOWARD BR	GRINDSTONE	PA	STRAIGHT	07/29/98	12:00 AM
8	691	TOWARD GRINDSTONE	RT 40 WEST EXIT	GRINDSTONE	PA	EXIT	07/29/98	12:00 AM
9	1251	RT 40 EAST NEAR PG2	RT 40 EAST NEAR PG2	GRINDSTONE	PA	RIGHT	07/29/98	12:00 AM
10	672	NEW RT 40 TOWARD GR	RT 40 WEST TOWARD	GRINDSTONE	PA	LEFT	07/29/98	12:00 AM

DISTRIBUTED BY:



ATT Systems (S'pore) Pte Ltd

10 Ubi Crescent #04-24 Ubi TechPark (Lobby B)
Singapore 408564
Tel: (65) 67497840 Fax: (65) 67497842
email: sales@attsystems.com.sg
website: www.attsystems.com.sg